

Procedure 3) – See Figure 3

Begin your project with the assembly of pieces A,C,J,K & Q. First glue and nail pieces J to A using 1-1/4" finishing nails, keep the ends of J flush with A, and locate the bottom of J, 2-1/2" up from the bottom of A as illustrated in Figure 3. Repeat this procedure for pieces K & Q, but ensure that the ends of K are 1/2" inside the edges of Q to allow for the shed of the fasteners. Next, glue and nail all four sides around the perimeter of the sheet of plywood together by gluing and nailing together Q into A. Make sure the bottom edges and outside corners (detail of Figure 4) are all even. Glue and nail piece C to the top of pieces of J & K. The four non-turning wheels are glued in place as referenced in Figure 3, one finishing nail will hold them until the glue sets.

Procedure 4) – See Figure 4 & 5

Next corners the assembly of the top cab. Glue and nail together pieces N & M as illustrated in Figure 5. Nail through piece N into piece M, ensure the outside edges and bottoms are flush. Insert piece B inside the bottom, glue and nail through M into B, keeping the edges flush again. Locate the roof, piece L on the top of the assembled pieces and mark this location with a pencil on the bottom of the roof. Before you install the roof, you may wish to check the fit of the roof by gluing and nailing pieces L, M, N and through piece B into piece Q. Apply glue to the top edges of J & N and clamp piece L in place as per your previous pencil marks. Start by locating the top in place and nail with a few finishing nails in one end. You will also need to insert several #8 fished screws to assist the glue in holding down the 1/4" plywood. It will be easier to clamp the assembly if you insert a piece of lumber between the clamps and the top of piece L. As it takes a substantial pressure to clamp this down, you may need 3 or 4 clamps each end. When the glue has dried overnight and you attempt to remove the clamps, do so carefully, as the tension in the 1/4" plywood may tend to pull the glue joint apart. If this happens, remove the clamps one at a time, and insert a few #8 fished screws, as necessary, to prevent the top from lifting. Countersink and fill the screw heads, and nails.

Procedure 5) – See Figure 3

The non-turning wheels are fastened as illustrated in Figure 3. Use glue and nail in place with one finishing nail per wheel. This is sufficient until the glue sets.

Procedure 6) – See Figure 7 & 8

Construct the hitch assembly – two will be required, one for the caboose and one to add to the locomotive, if you do not already have one, this is project #507. Glue and nail together pieces E, F & G as per Figure 7, keep the bottom and rear edges flush. Apply glue to the 1/2" dowel, and insert in the hole in E, keep the dowel flush at the bottom.

Procedure 7) – See Figure 3

Attach the casters to the bottom of piece C. First attach rolling blocks S in place in the corners of J & K with glue and 1-1/4" nails. Next screw the casters in place using four 3/4" screws in each one. Ensure there is enough space for the caster to revolve without hitting the sides.

Procedure 8) – See Figure 9

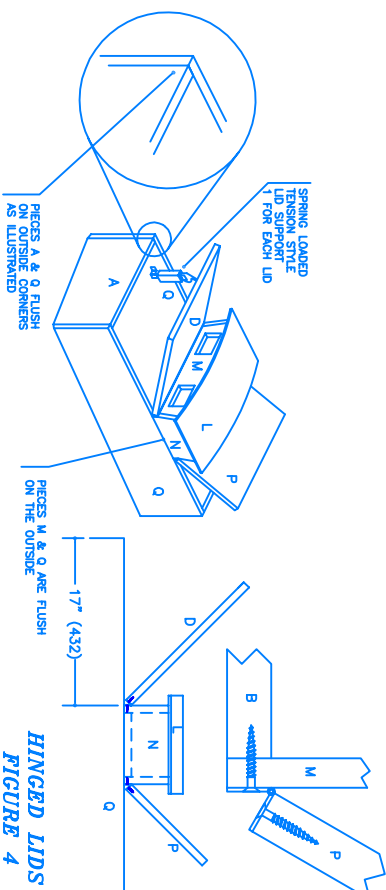
Attach the tensioned lid support hardware as shown in Figure 9 following the manufacturer's instructions. One is required for each lid. Other types can be used, but use something that will protect little fingers from being injured if the lid should fall!

Procedure 9)

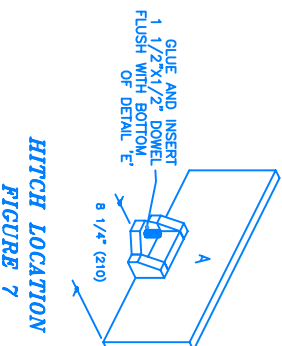
Finish your project off with paint or stain of your choice. Do not use leaded paint for any projects that will be around children.

On Materials:

We recommend using birch plywood for this project as the surfaces are smooth, and this allows you to use a varathane varnish on the interior for a smooth finish.

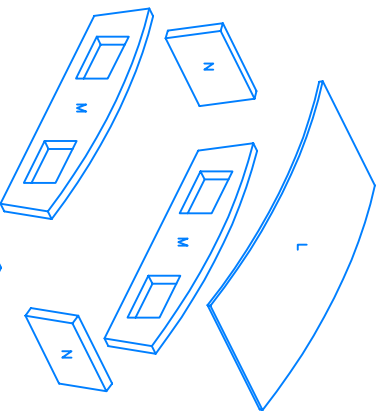


HINGED LIDS
FIGURE 4

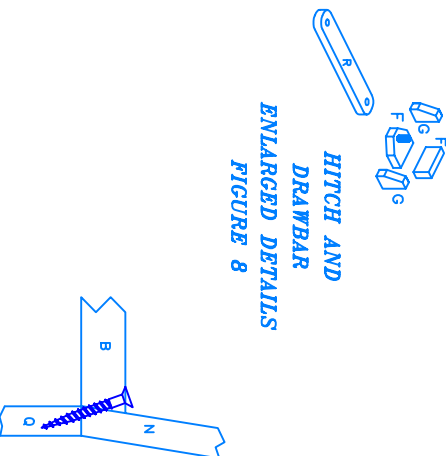


HITCH LOCATION
FIGURE 7

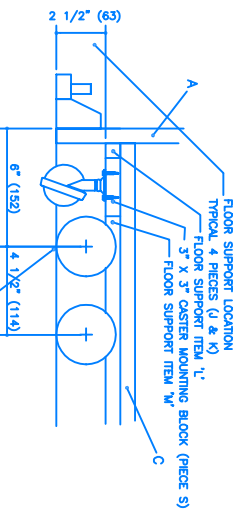
CABOOSE TOP
ENLARGED
EXPLODED VIEW
FIGURE 5



HITCH AND
DRAWBAR
ENLARGED DETAILS
FIGURE 8

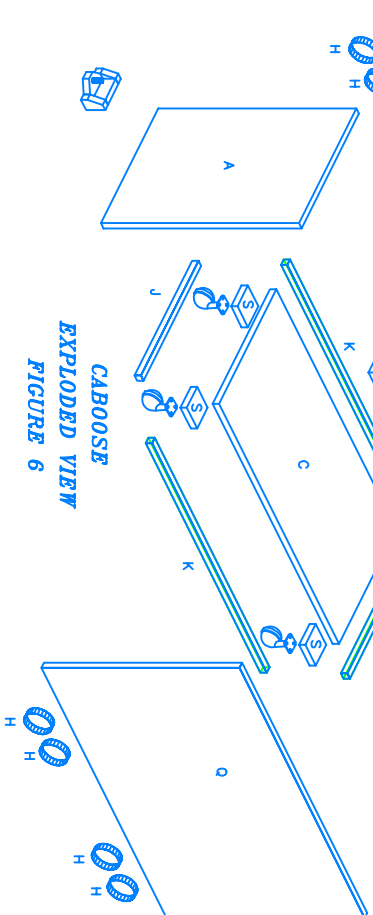


TOP ATTACHMENT
FIGURE 10



WHEELS AND FLOOR
LOCATIONS FIGURE 3

CABOOSE
EXPLODED VIEW
FIGURE 6



CABOOSE
COMPLETED PROJECT

